

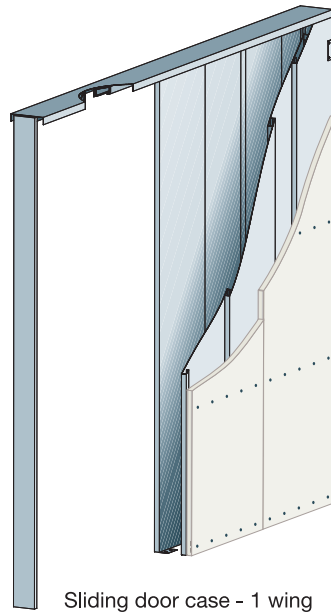
– Sliding door cases

Wipro sliding door cases made from galvanised steel plate can be individually adjusted and adapted to the wall opening. They can be produced for any strength or opening of wall.

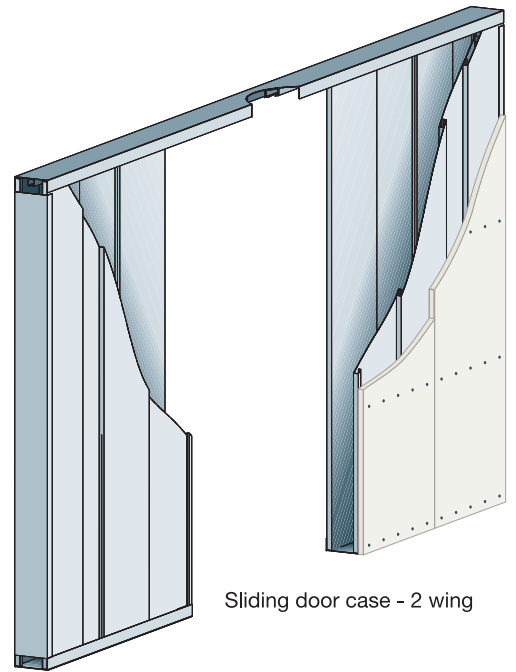
The sliding door case system is suitable for both dry and plaster construction. The high grade, maintenance-free Alu-light rails for sliding doors with stoppers and rollers is included in the sliding door case system and is included in the assembly.

The sliding door cases are available with one or two wings for sliding doors.

Wipro sliding door cases for dry construction

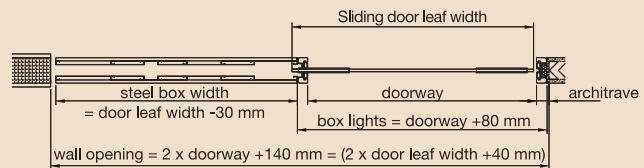


Sliding door case - 1 wing

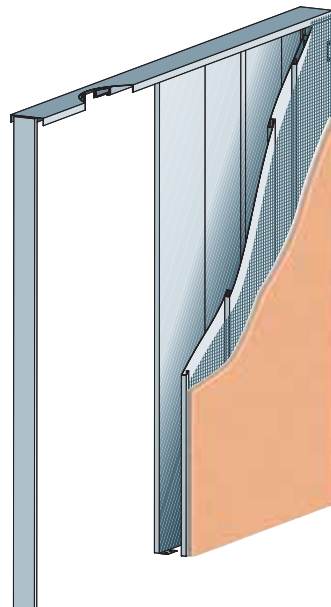


Sliding door case - 2 wing

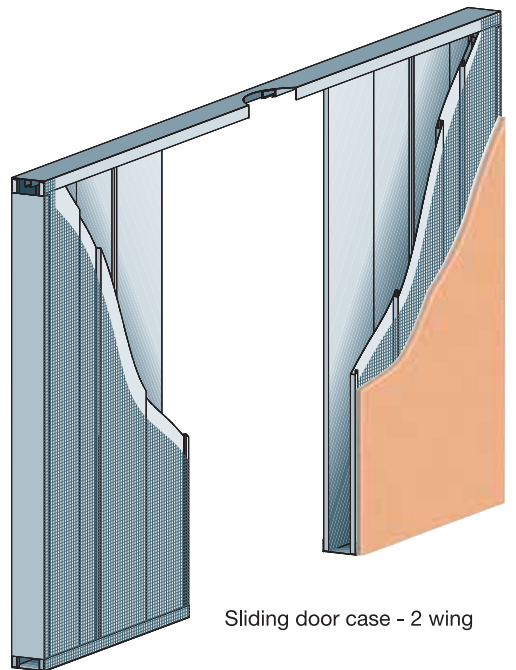
1-wing



Wipro sliding door cases for integrating in the brickwork for plastering

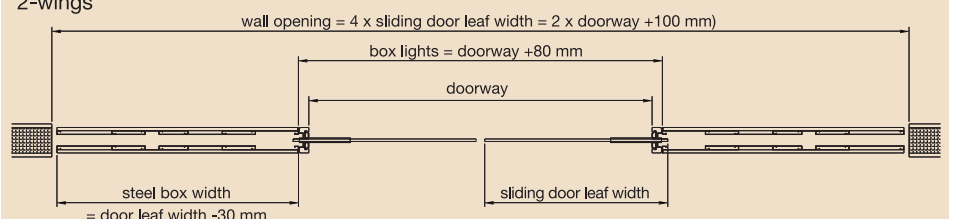


Sliding door case - 1 wing



Sliding door case - 2 wing

2-wings



Sliding door cases

delivery includes: Sliding door case for use for dry or brickwork construction for plastering;
 The case is made of galvanised steel, is adjustable and the door will run "inside" the wall;
 including Alu-track, trolleys and in few steps "ready to use"

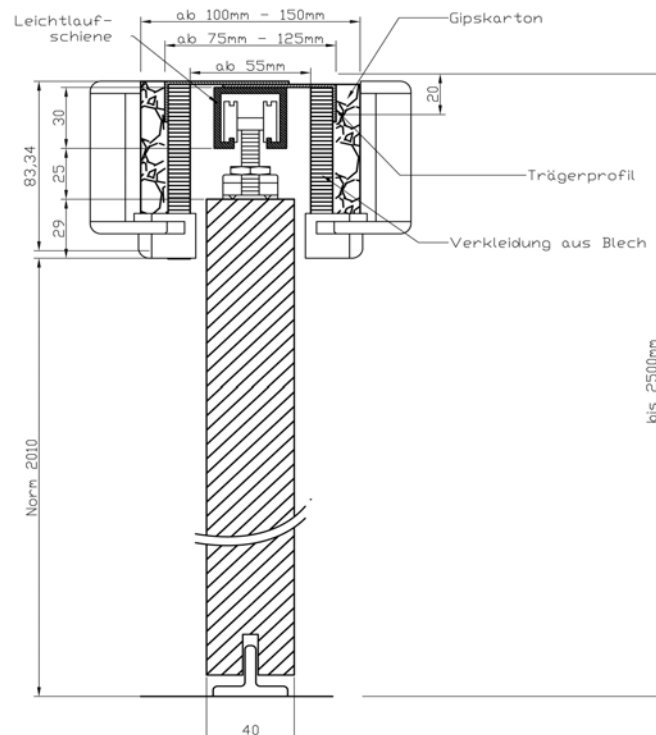
Sliding door case

1-wing

min. width of doorframe is 450mm

finish doorway	wall thickness up to 15cm
55 x 201 cm - 90 x 201 cm	345,-
55 x 211 cm - 90 x 211 cm	380,-
55 x 221 cm - 90 x 221 cm	418,-
55 x 231 cm - 90 x 231 cm	460,-
55 x 241 cm - 90 x 241 cm	506,-

extra charge for integration in brickwork for plastering:	50,-	
extra charge for extension for sliding door without frame:	55,-	
extra charge for double wing extension:	Price x 2, add 40,-	
extra charge for "comes ready assembled"	1-wing	92,-
	2-wing	160,-



Special dimension on specific order!